

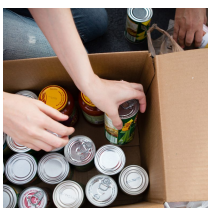


Part of our heritage as Lutheran Christians is Christ-centered worship. The order of worship at the Breslin Center will follow Luther's German Mass enriched by Christ-centered hymns and spiritual songs. The LCMS has been known as the "singing Church." This worship celebration will not disappoint! As we celebrate God's grace for 500 years since the Reformation, we recognize the power of the Word of God through congregational singing and choirs, a gift of God through the Reformation.

### Ticket Info and FAQs

- We have already reached the 5,000-ticket-reserved mark! We highly recommend you [reserve tickets](#) now as people sign-up. This will not affect seating with congregation as final ticketing will not take place until September 5.
- Tickets are required for everyone over the age of 2.
- To expedite the registration process, you can reserve tickets in batches of up to 20 by entering your own name. Keep track of names on your ticket sign-up form.
- A summary of tickets for your congregation will be emailed to you on August 15 for you to review and edit accordingly to ensure the correct number of tickets are received in September.
- We have recently added more [frequently asked questions](#) to the website. Please check first to see if your questions on tickets, choirs, parking, security, and more are listed. If you still have a question and it is not listed, please contact me by my email or phone number found below.
- The Breslin Center Concourse Concessions will open at 2 p.m.

### Worship Service Ingathering



Wellspring Lutheran Services has identified four Lansing-area care agencies that will receive items from the ingathering. Each Michigan District Region is asked to bring items to the worship service, where trucks will be filled. Click [here](#) to find out what region you are located in and what items your congregation should bring.

## Volunteer Opportunities

- 920 singers have registered for the the Adult [Festival Choir](#). Registration will remain open until the 1,000 seats reserved have been filled. Music will be available in August along with pre-worship service rehearsal sites.
- Nominations and registrations are still open for the youth [Honors Choirs](#), especially the middle-school-age youth.
- Volunteers are needed to serve on the setup team on Saturday, as greeters and ushers for the service, and as the tear-down crew on Sunday night. All volunteers receive a free commemorative t-shirt. To volunteer, click [here](#).

## Decorate a Door

- As part of the "Here We Stand For You" Community Event celebration, every congregation is asked to decorate a door, which can serve as a focal point for your event and a great doorway to sharing the Good News of Jesus with your community. These doors, in all of their different colors, will line the entrance hall of the Breslin Center.
- Please take a moment to [take this poll](#) to let us know if you are bringing a door for display to the worship event. Thank you!
- Doors should be brought to the Breslin Center on Saturday, October 14 from 1-3 p.m. or prior to 2 p.m. on Sunday, October 15. Location for drop-off will be indicated in a future update.

We are so thankful you have volunteered to serve as your congregation's ticket captain. Do not hesitate to contact me if you have questions or let me know how I can assist you in this important role.

God's blessings upon your day!

### Debbie Hughes, CMP

Event Coordinator

Michigan District, LCMS

3773 Geddes Rd

Ann Arbor MI 48105

[debra.hughes@michigandistrict.org](mailto:debra.hughes@michigandistrict.org)

734.213.3234



Michigan District, LCMS  
888.225.2111  
[michigandistrict.org](http://michigandistrict.org)

STAY CONNECTED:

